

RERA : PRM/KA/RERA/1251/446/PR/210111/003772



A Project by SALARPURIA SATTVA

WHERE *You Stay*  
Says WHO *You Are*



LOCATION

Kasavanahalli Village  
Sarjapur Main Road

*Majestic Towers*

ARTIST IMPRESSION



## *An exciting life awaits you*

*SIGNET is a statement of your unique style and your penchant for elegant living. That's why we have curated these special homes that elevate your lifestyle and give you a sense of fine living.*

*Ideally located on Sarjapur Main Road, Salarpuria Sattva Signet offers Signature 1, 2 & 3 homes with all modern amenities, to give you a well-rounded lifestyle. Built on classy and clean lines, to make your life here meaningful and complete.*

*What's more, it's a unique statement of your good taste for the good life!*

*Live the life you dream of  
at a central location*

**TWO MAGNIFICENT BLOCKS**

**Tower A - 106 Apartments  
Tower B - 102 Apartments  
1,2 & 3 BHK Homes  
Ground + 17 Floors**

## *Outstanding Features*

**Exclusive stand-alone 9000 sq. ft. clubhouse with all amenities**

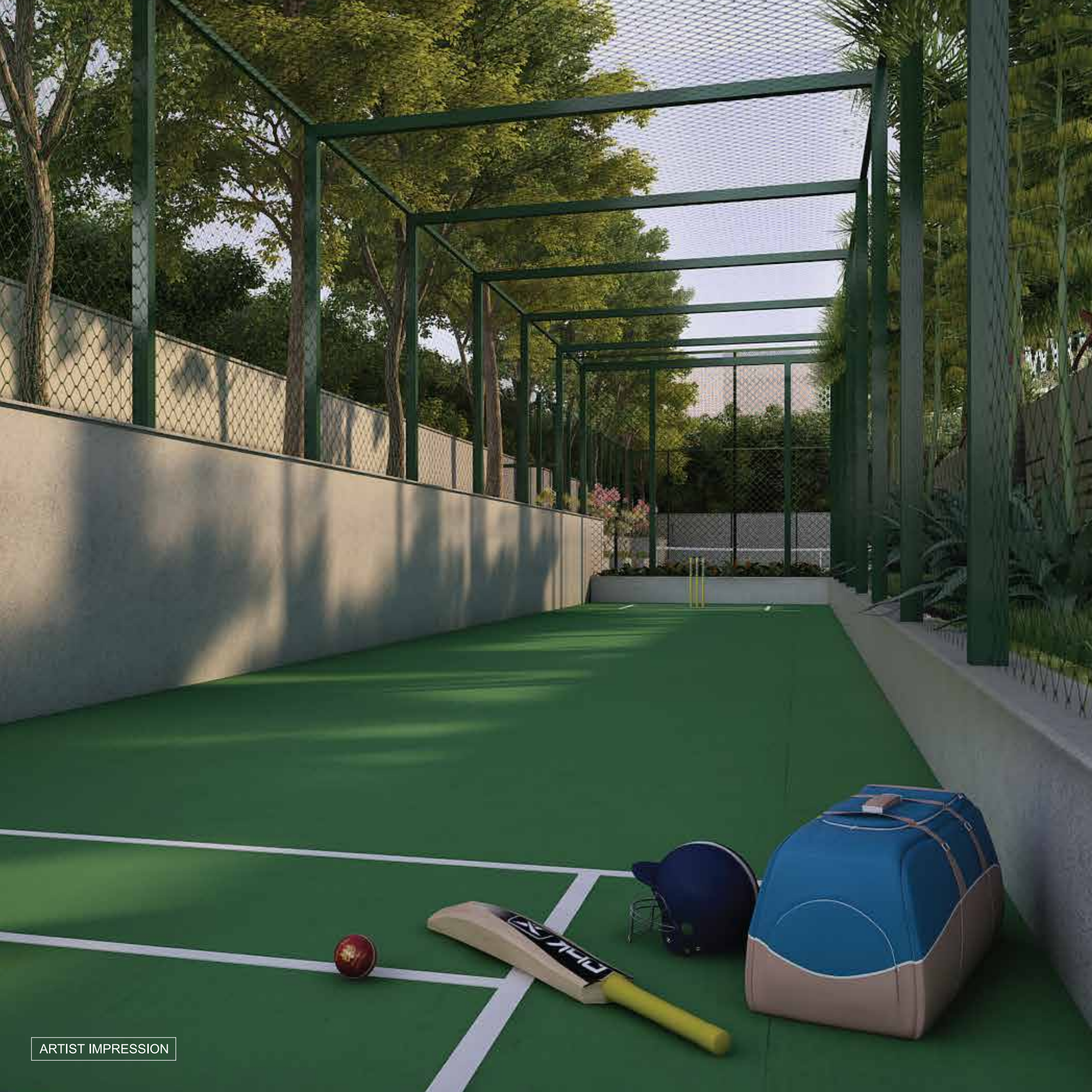
- 100% Vaastu compliant homes
- Built on an area of 2.48 acres with 15% open spaces
- Tall stately towers with high visibility in the neighbourhood
- Good landscaping and excellent views between the 2 blocks
- 2nd floor apartments have exclusive terraces
- Apartments are open on all sides for good ventilation
- Large balconies with good landscape views

**1 BHK : 751 SQ FT**

**2 BHK : 1173 SQ FT**

**3 BHK + 2T : 1473 SQ FT**

**3 BHK + 3T : 1742 SQ FT**



ARTIST IMPRESSION

# Amenities

*The entire project is a safe and happy place for kids too! Signet offers an exclusive kids zone, for the complete entertainment of kids living here. So that their evenings are filled with fun and frolic. Add to that, the vehicles are not allowed to enter the kids zone making it a safe haven for children.*

*Common courtyards with landscaping, make it an attractive option too. What more can you ask for?*

## **OUTDOOR AMENITIES**

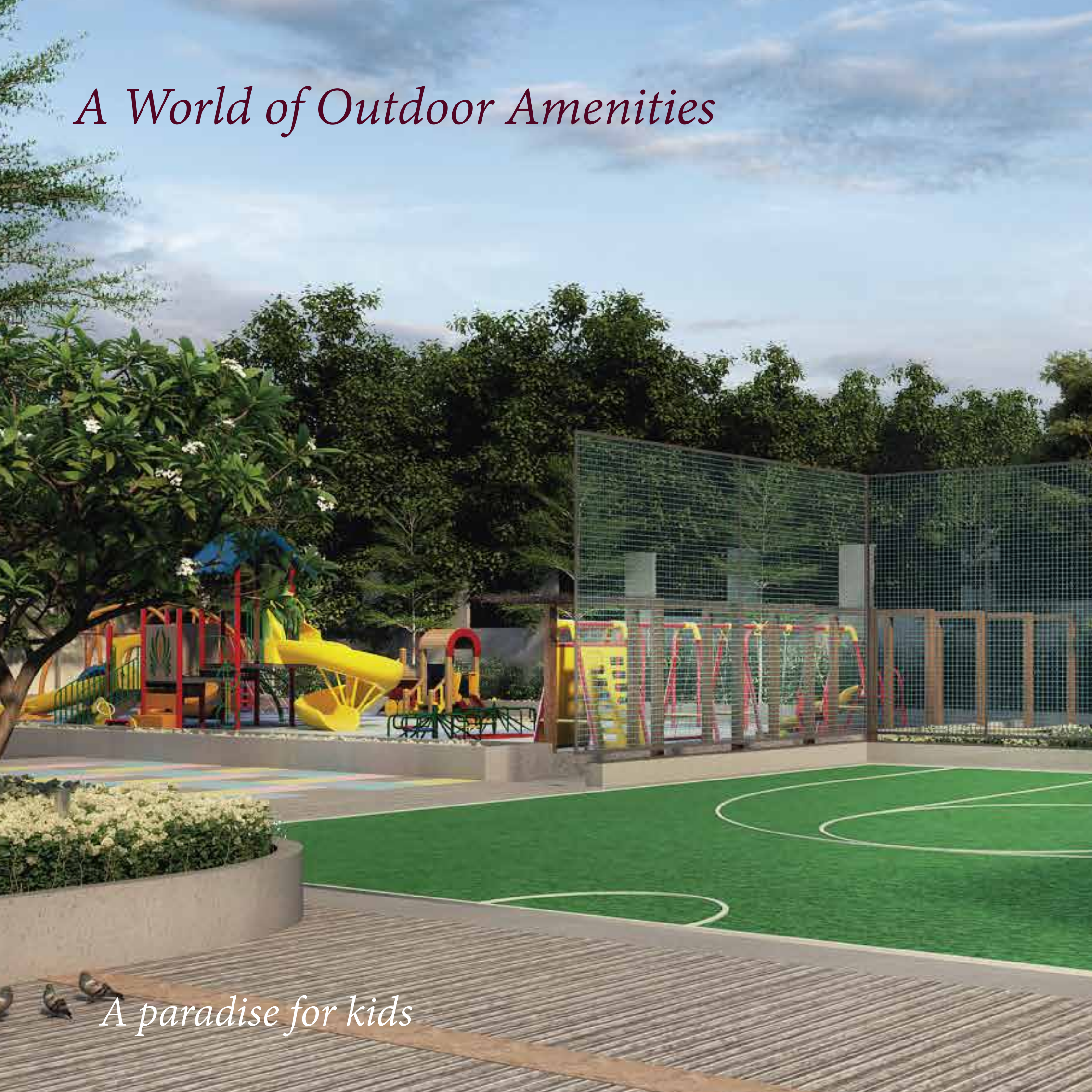
- Interactive spillover space
- Children's play area
- Leisure seating
- Amphitheatre (Stepped seaters)
- Half basketball court
- Outdoor Gym Equipment
- Tennis
- Cricket practice pitch
- Swimming pool

- Chalk floor
- Snakes and ladder
- Skating
- Chess

## **INDOOR AMENITIES**

- Indoor Games / Board Games / Reading Lounge/ Foos ball
- Table Tennis
- Multipurpose hall
- Squash
- Pool table room
- Sports Stimulator
- Small Party hall
- Gym

# *A World of Outdoor Amenities*



*A paradise for kids*





ARTIST IMPRESSION

# Location



## PROJECT LOCATION

300 mtrs away from Sarjapur Main Road

## *Location Highlights*

Sattva Spectrum	- 00 kms	Kaikondrahalli Lake	- 1 Kms
Wipro Corporate Office	- 500 Mtr	Market Square Mall	- 1.5 Kms
Star Badminton Academy	- 500 Mtr	Columbia Asia Hospital	- 3 Kms
BN Speciality Hospital	- 950 Mtr	AIMS Pre-school	- 1.4 Kms
Decathlon	- 4.1 Kms	Sarjapur Road Fire station	- 1.4 Kms
Karmelaram Rly Stn	- 3 Kms	Asia Pacific World School	- 2 Kms
Bellandur Gate	- 3.5 Kms	GEAR Innovative Intl School	- 3.7 Kms
Electronic City	- 11 Kms	India International School	- 4.8 Kms
MG Road	- 13.7 Kms	New Horizon Gurukul	- 5.7 Kms
Whitefield	- 13 Kms	Koramangala	- 5.9 Kms
Phoenix Marketcity	- 13.9 Kms	Silk Board Junction	- 7.9 Kms
Bangalore International Airport	- 49.5 Kms	Marathahalli Junction	- 8.3 Kms
		Greenwood High ICSE Campus	- 11 Kms



ARTIST IMPRESSION

# MASTER PLAN



## LEGEND - GENERAL AND AMENITIES

- |   |   |  |
|---|---|--|
| 1. Entry                                | 11. Interactive spillover space with planters and seating | 21. Outdoor gym area                     |
| 2. Exit                                 | 12. Tower greens  | 22. Cricket practice area                |
| 3. Security                             | 13. Ramp access to landscaped quadrangle                  | 23. Tennis                               |
| 4. Entrance drive way                   | 14. Limited access to fire driveway beyond this point     | 24. Skating                              |
| 5. Reception entrance                   | 15. Chalk floor for driveway                              | 25. Chess                                |
| 6. Surface car park with grass pavers   | 16. Snakes and ladders area                               | 26. Grass pavers with pedestrain walkway |
| 7. Fire driveway                        | 17. Children's play area                                  | 27. Swimming pool                        |
| 8. Entry ramp                           | 18. Leisure seating spaces                                | 28. Pool deck                            |
| 9. Exit ramp                            | 19. Stepped seating                                       | 29. Reflection waterbody                 |
| 10. Covered approach corridor to towers | 20. Half basketball court                                 |  |

## Legend - services

- |    |                                 |
|----|---------------------------------|
| A. | DG                              |
| B. | RMU and transformer             |
| C. | Organic waste converter         |
| D. | Gas bank                        |
| E. | Basement ventilation cutouts    |
| F. | STP (Basement)                  |
| G. | Water sump and pumps (Basement) |

# Open spaces to rejuvenate you

*With 60% of open spaces, water bodies in the front, and a pool that overlooks the clubhouse, there's plenty of respite in and around the property. Our exquisite 3 BHK homes offer you the luxury of overlooking the swimming pool. Each of the towers have 3 sides open, with beautiful views. The spacious outdoor sit-outs for each apartment is truly luxurious. The well-ventilated homes with sunlight streaming in, gives one a sense of wellbeing and adds to your comfort.*



# Specifications

## STRUCTURE

R.C.C framed structure with Porotherm / Cement block walls

## FLOORING & DADO:

### a. Common area:

- Ground floor Entrance & Lift lobbies: Granite/Vitrified flooring
- Basement lift lobby: Vitrified tile flooring
- Upper floor lift lobbies: Vitrified tile flooring
- Staircase: Step tile flooring
- Fire Staircase: Cement finish
- Corridors: Vitrified tile flooring
- Lift jamb will be of Granite / Tiles

### b. Apartment:

- Foyer: Vitrified Tiles
- Living & Dining: Vitrified Tiles
- Master bedroom: Vitrified Tiles
- Other Bedrooms: Vitrified Tiles
- Balcony: Antiskid Ceramic Tiles
- Kitchen: Vitrified Tiles

## CLADDING

- Kitchen dado: Ceramic tiles 600 mm above the counter
- Toilet dado: Ceramic tile dado up to 2100 mm height

## WINDOWS

- UPVC / Aluminium windows with mosquito mesh (Liv/Din, All Bedrooms)

## UTILITY

- Inlet & Outlet for washing machine

## TOILETS

- Chromium plated fittings for all the toilets
- CP shower for all the toilets
- Health Faucet for all the toilets
- Wall mounted EWC with exposed flush tank for all the toilets
- Granite Counter with counter top wash basin in Master Bedroom toilets only and wash basin in all other toilets
- Anti-skid Ceramic tiles flooring

## KITCHEN

- Electrical Provision for water purifier
- Reticulated Gas piping connection –At extra cost
- Tile dado of 2 feet above Kitchen counter level (Kitchen granite counter & sink will not be provided)
- Hot and cold wall mixer
- Provision for exhaust fan

## DOORS

- Main door of wooden frame / RCC
- Main door shutter with one side veneer with melamine polish and other side paint finish
- Internal doors of RCC frame/stone frame /woodenised frame / Internal shutters flush doors with paint finish.
- Toilet doors– RCC frame/ Stone frame / Woodenised frame

## LIFT

- Automatic passenger lifts



## PAINTING

- Exterior walls with weather coat texture paint as per design
- Internal walls with Plastic Emulsion and ceilings with oil bound distemper
- Enamel paint on all MS railings/ grills

## SECURITY SYSTEMS

- Round the clock security
- Trained security personnel
- A CCTV camera installed in the Lobby/ Security Room /Periphery Vital Points

## ELECTRICAL

- One TV point & telephone point in living room & Master bedroom
- 15 Amp points for Master Bedroom and Living room for AC
- Intercom facility from each apartment to the security room, clubhouse & other apartments
- Individual apartments to have a BESCOM power of 1 BHK+1T is 3KVA, 2BHK & 3BHK+2T is 4 KVA and 3BHK+3T is 5 KVA

## CABLE TV

- An exclusive network of Cable TV will be provided with a centralized control room at a convenient location (users to pay the operator on a monthly basis)

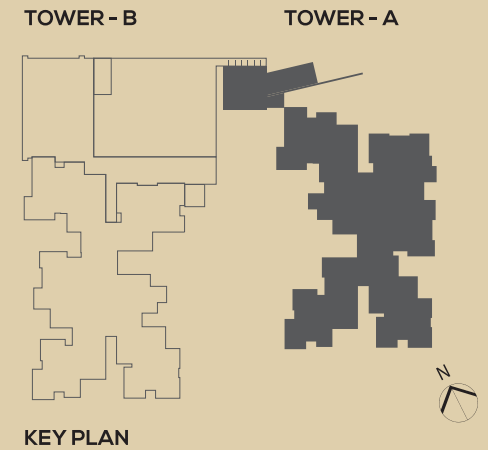
## BACK-UP GENERATOR (AT EXTRA COST)

- 1.5KVA for 3 BHK+3T
- 1KVA for 2BHK & 3BHK+2T
- 0.5 KVA for 1BHK



ARTIST IMPRESSION

*Elegant Interiors*



**TYPE A**  
3 BHK + 3T  
A-002

**TYPE D**  
2 BHK + 2T  
A-003

**TYPE E**  
2 BHK + 2T  
A-004

**TYPE B**  
3 BHK + 2T  
A-001

**TYPE C**  
3 BHK + 2T  
A-005

Unit No.	Type Of Units		Saleable Area		Carpet Area		Balcony Area	
	Unit Description	Type	In Sqm	In Sft	In Sqm	In Sft	In Sqm	In Sft
A-001	3BHK + 2T	B	136.87	1,473.31	90.91	978.56	9.54	102.69
A-002	3BHK + 3T	A	161.90	1,742.64	107.13	1,153.15	13.56	145.96
A-003	2BHK + 2T	D	105.48	1,135.43	69.51	748.21	7.54	81.16
A-004	2BHK + 2T	E	109.01	1,173.37	70.21	755.74	7.43	79.98
A-005	3BHK + 2T	C	133.93	1,441.61	90.30	971.99	8.63	92.89

Furniture and fixtures shown only for representative purpose

## TOWER - A GROUND FLOOR PLAN



**TYPE G**  
2 BHK + 2T  
B-002

**TYPE B**  
3 BHK + 2T  
B-001

**TYPE C**  
3 BHK + 2T  
B-003

TOWER - B

TOWER - A

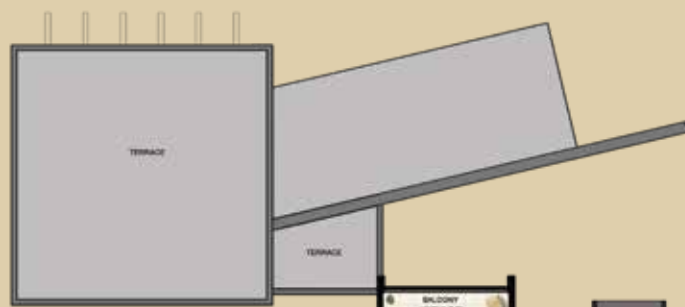
KEY PLAN



## TOWER - B GROUND FLOOR PLAN

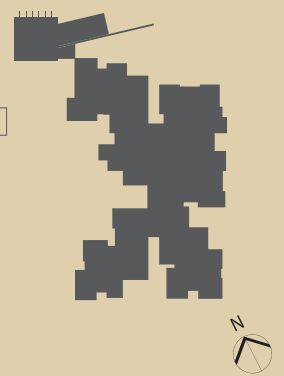
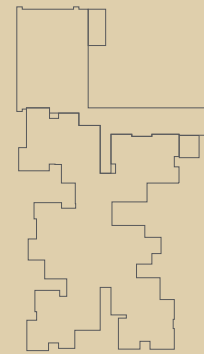
Unit No.	Type Of Units		Saleable Area		Carpet Area		Balcony Area	
	Unit Description	Type	In Sqm	In Sft	In Sqm	In Sft	In Sqm	In Sft
B-001	3BHK + 2T	B	136.87	1,473.31	90.91	978.56	9.54	102.69
B-002	2BHK + 2T	G	108.77	1,170.79	70.14	754.99	7.58	81.59
B-003	3BHK + 2T	C	133.93	1,441.61	90.30	971.99	8.63	92.89

*Furniture and fixtures shown only for representative purpose*



TOWER - B

TOWER - A



KEY PLAN

**TYPE A**  
3 BHK + 3T  
A-103



**TYPE D**  
2 BHK + 2T  
A-104



**TYPE F2**  
1 BHK + 1T  
A-102



**TYPE E**  
2 BHK + 2T  
A-105



**TYPE B**  
3 BHK + 2T  
A-101



**TYPE C**  
3 BHK + 2T  
A-106



Unit No.	Type Of Units		Saleable Area		Carpet Area		Balcony Area	
	Unit Description	Type	In Sqm	In Sft	In Sqm	In Sft	In Sqm	In Sft
A-101	3BHK + 2T	B	136.87	1,473.31	90.91	978.56	9.54	102.69
A-102	1BHK + 1T	F2	90.17	970.56	47.64	512.80	18.07	194.51
A-103	3BHK + 3T	A	161.90	1,742.64	107.13	1,153.15	13.56	145.96
A-104	2BHK + 2T	D	105.48	1,135.43	69.51	748.21	7.54	81.16
A-105	2BHK + 2T	E	109.01	1,173.37	70.21	755.74	7.43	79.98
A-106	3BHK + 2T	C	133.93	1,441.61	90.30	971.99	8.63	92.89

Furniture and fixtures shown only for representative purpose

**TOWER - A**  
1<sup>st</sup> FLOOR PLAN

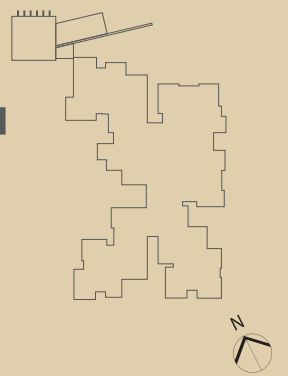


TOWER - B

TOWER - A



KEY PLAN



**TYPE G**  
2 BHK + 2T  
B-102

BALCONY  
(4'0" X 10'10")

BALCONY  
(2'4" X 10'6")

**TYPE H2**  
1 BHK + 1T  
B-103

**TYPE B**  
3 BHK + 2T  
B-101

BALCONY  
(11'4" X 2'4")

BALCONY  
(2'4" X 10'6")

**TYPE C**  
3 BHK + 2T  
B-104

BALCONY  
(10'10" X 2'4")

**TOWER - B**  
1<sup>st</sup> FLOOR PLAN

Unit No.	Type Of Units		Saleable Area		Carpet Area		Balcony Area	
	Unit Description	Type	In Sqm	In Sft	In Sqm	In Sft	In Sqm	In Sft
B-101	3BHK + 2T	B	136.87	1,473.31	90.91	978.56	9.54	102.69
B-102	2BHK + 2T	G	108.77	1,170.79	70.14	754.99	7.58	81.59
B-103	1 BHK + 1T	H2	89.58	964.19	47.64	512.80	18.41	198.17
B-104	3BHK + 2T	C	133.93	1,441.61	90.30	971.99	8.63	92.89

Furniture and fixtures shown only for representative purpose

**TYPE A1**  
3 BHK + 3T  
A-203



**TYPE F1**  
1 BHK + 1T  
A-202



**TYPE B1**  
3 BHK + 2T  
A-201



**TYPE D1**  
2 BHK + 2T  
A-204



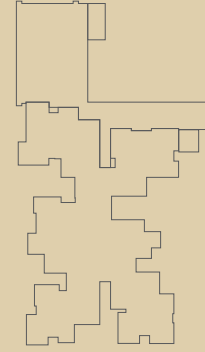
**TYPE E1**  
2 BHK + 2T  
A-205



**TYPE C1**  
3 BHK + 2T  
A-206

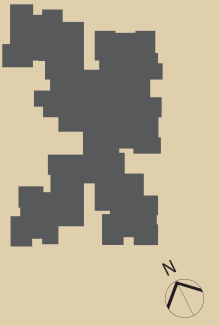


TOWER - B



KEY PLAN

TOWER - A



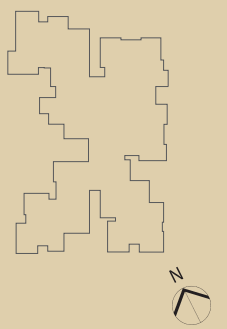
Unit No.	Type Of Units		Saleable Area		Carpet Area		Balcony Area	
	Unit Description	Type	In Sqm	In Sft	In Sqm	In Sft	In Sqm	In Sft
A-201	3BHK + 2T	B1	136.87	1,473.31	90.91	978.56	9.54	102.69
A-202	1BHK + 1T	F1	69.70	750.27	47.64	512.80	2.62	28.20
A-203	3BHK + 3T	A1	161.90	1,742.64	107.13	1,153.15	13.56	145.96
A-204	2BHK + 2T	D1	105.48	1,135.43	69.51	748.21	7.54	81.16
A-205	2BHK + 2T	E1	109.01	1,173.37	70.21	755.74	7.43	79.98
A-206	3BHK + 2T	C1	133.93	1,441.61	90.30	971.99	8.63	92.89

**TOWER - A**  
2<sup>nd</sup> FLOOR PLAN



TOWER - B

TOWER - A



KEY PLAN

**TYPE A1**  
3 BHK + 3T  
B-203

**TYPE D1**  
2 BHK + 2T  
B-204

**TYPE G1**  
2 BHK + 2T  
B-202

**TYPE H1**  
1 BHK + 1T  
B-205

**TYPE B1**  
3 BHK + 2T  
B-201

**TYPE C1**  
3 BHK + 2T  
B-206

**TOWER - B**  
2<sup>nd</sup> FLOOR PLAN

Unit No.	Type Of Units		Saleable Area		Carpet Area		Balcony Area		Terrace Area	
	Unit Description	Type	In Sqm	In Sft	In Sqm	In Sft	In Sqm	In Sft	In Sqm	In Sft
B-201	3BHK + 2T	B1	136.87	1,473.31	90.91	978.56	9.54	102.69	-	-
B-202	2BHK + 2T	G1	108.77	1,170.79	70.14	754.99	7.58	81.59	-	-
B-203	3BHK + 3T	A1	161.90	1,742.64	107.13	1,153.15	13.56	145.96	48.92	526.57
B-204	2BHK + 2T	D1	105.48	1,135.43	69.51	748.21	7.54	81.16	94.84	1020.85
B-205	1BHK + 1T	H1	69.83	751.63	47.64	512.80	2.72	29.28	38.11	410.21
B-206	3BHK + 2T	C1	133.93	1,441.61	90.30	971.99	8.63	92.89	-	-

Furniture and fixtures shown only for representative purpose



**TYPE A**  
3 BHK + 3T  
A-303 TO A-1303  
A-1503 TO A-1603



**TYPE F**  
1 BHK + 1T  
A-302 TO A-1302  
A-1502 TO A-1602



**TYPE B**  
3 BHK + 2T  
A-301 TO A-1301  
A-1501 TO A-1601



**TYPE D**  
2 BHK + 2T  
A-304 TO A-1304  
A-1504 TO A-1604



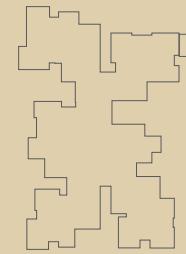
**TYPE E**  
2 BHK + 2T  
A-305 TO A-1305  
A-1505 TO A-1605



**TYPE C**  
3 BHK + 2T  
A-306 TO A-1306  
A-1506 TO A-1606

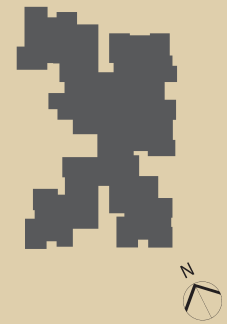


TOWER - B



KEY PLAN

TOWER - A



Unit No.	Type Of Units		Saleable Area		Carpet Area		Balcony Area	
	Unit Description	Type	In Sqm	In Sft	In Sqm	In Sft	In Sqm	In Sft
A-301 TO A-1301, A-1501 TO A-1601	3BHK + 2T	B	136.87	1,473.31	90.91	978.56	9.54	102.69
A-302 TO A-1302, A-1502 TO A-1602	1BHK + 1T	F	69.70	750.27	47.64	512.80	2.62	28.20
A-303 TO A-1303, A-1503 TO A-1603	3BHK + 3T	A	161.90	1,742.64	107.13	1,153.15	13.56	145.96
A-304 TO A-1304, A-1504 TO A-1604	2BHK + 2T	D	105.48	1,135.43	69.51	748.21	7.54	81.16
A-305 TO A-1305, A-1505 TO A-1605	2BHK + 2T	E	109.01	1,173.37	70.21	755.74	7.43	79.98
A-306 TO A-1306, A-1506 TO A-1606	3BHK + 2T	C	133.93	1,441.61	90.30	971.99	8.63	92.89

**TOWER - A**  
3<sup>rd</sup> TO 13<sup>th</sup> FLOOR PLAN  
15<sup>th</sup> AND 16<sup>th</sup>  
(TYPICAL FLOOR PLAN)

**TYPE A**  
**3 BHK + 3T**  
 B-303 TO B-1303  
 B-1503, B-1603

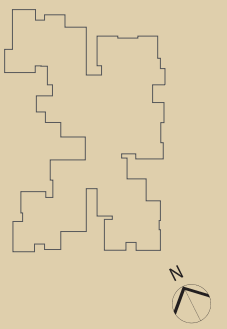


**TYPE D**  
**2 BHK + 2T**  
 B-304 TO B-1304,  
 B-1504, B-1604



TOWER - B

TOWER - A



KEY PLAN

**TYPE G**  
**2 BHK + 2T**  
 B-302 TO B-1302  
 B-1502, B-1602



**TYPE H**  
**1 BHK + 1T**  
 B-305 TO B-1305,  
 B-1505, B-1605



**TYPE B**  
**3 BHK + 2T**  
 B-301 TO B-1301,  
 B-1501, B-1601



**TYPE C**  
**3 BHK + 2T**  
 B-306 TO B-1306  
 B-1506, B-1606



**TOWER - B**  
**3<sup>rd</sup> TO 13<sup>th</sup> FLOOR PLAN**  
**15<sup>th</sup> AND 16<sup>th</sup>**  
**(TYPICAL FLOOR PLAN)**

Unit No.	Type Of Units		Saleable Area		Carpet Area		Balcony Area	
	Unit Description	Type	In Sqm	In Sft	In Sqm	In Sft	In Sqm	In Sft
B-301 TO B-1301, B-1501, B-1601	3BHK + 2T	B	136.87	1,473.31	90.91	978.56	9.54	102.69
B-302 TO B-1302, B-1502, B-1602	2BHK + 2T	G	108.77	1,170.79	70.14	754.99	7.58	81.59
B-303 TO B-1303, B-1503, B-1603	3BHK + 3T	A	161.90	1,742.64	107.13	1,153.15	13.56	145.96
B-304 TO B-1304, B-1504, B-1604	2BHK + 2T	D	105.48	1,135.43	69.51	748.21	7.54	81.16
B-305 TO B-1305, B-1505, B-1605	1BHK + 1T	H	69.83	751.63	47.64	512.80	2.72	29.28
B-306 TO B-1306, B-1506, B-1606	3BHK + 2T	C	133.93	1,441.61	90.30	971.99	8.63	92.89

Furniture and fixtures shown only for representative purpose

**TYPE A1**  
3 BHK + 3T  
A-1403

BALCONY  
(2'4" X 11'8")

BALCONY  
(11'8" X 2'4")

BALCONY  
(11'2" X 6'0")

**TYPE F1**  
1 BHK + 1T  
A-1402

BALCONY  
(4'0" X 6'0")

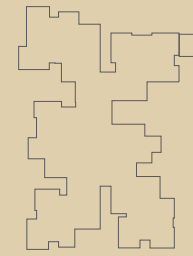
**TYPE D1**  
2 BHK + 2T  
A-1404

BALCONY  
(10'4" X 2'4")

BALCONY  
(11'0" X 4'0")

TOWER - B

TOWER - A



KEY PLAN



**TYPE E1**  
2 BHK + 2T  
A-1405

BALCONY  
(4'0" X 10'10")

BALCONY  
(2'4" X 10'6")

**TYPE C1**  
3 BHK + 2T  
A-1406

BALCONY  
(4'6" X 11'6")

**TYPE B1**  
3 BHK + 2T  
A-1401

BALCONY  
(13'6" X 4'6")

BALCONY  
(11'4" X 2'4")

BALCONY  
(10'10" X 2'4")

Unit No.	Type Of Units		Saleable Area		Carpet Area		Balcony Area	
	Unit Description	Type	In Sqm	In Sft	In Sqm	In Sft	In Sqm	In Sft
A-1401	3BHK + 2T	B1	136.87	1,473.31	90.91	978.56	9.54	102.69
A-1402	1BHK + 1T	F1	69.70	750.27	47.64	512.80	2.62	28.20
A-1403	3BHK + 3T	A1	161.90	1,742.64	107.13	1,153.15	13.56	145.96
A-1404	2BHK + 2T	D1	105.48	1,135.43	69.51	748.21	7.54	81.16
A-1405	2BHK + 2T	E1	109.01	1,173.37	70.21	755.74	7.43	79.98
A-1406	3BHK + 2T	C1	133.93	1,441.61	90.30	971.99	8.63	92.89

**TOWER - A**  
14<sup>th</sup> FLOOR PLAN

Furniture and fixtures shown only for representative purpose

**TYPE A1**  
3 BHK + 3T  
B-1403



**TYPE G1**  
2 BHK + 2T  
B-1402



**TYPE B1**  
3 BHK + 2T  
B-1401



**TYPE D1**  
2 BHK + 2T  
B-1404



**TYPE H1**  
1 BHK + 1T  
B-1405

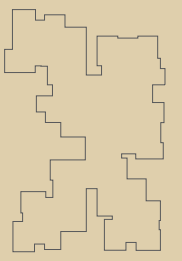


**TYPE C1**  
3 BHK + 2T  
B-1406



TOWER - B

TOWER - A



KEY PLAN

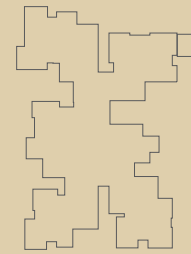
**TOWER - B**  
**14<sup>th</sup> FLOOR PLAN**

Unit No.	Type Of Units		Saleable Area		Carpet Area		Balcony Area	
	Unit Description	Type	In Sqm	In Sft	In Sqm	In Sft	In Sqm	In Sft
B-1401	3BHK + 2T	B1	136.87	1,473.31	90.91	978.56	9.54	102.69
B-1402	2BHK + 2T	G1	108.77	1,170.79	70.14	754.99	7.58	81.59
B-1403	3BHK + 3T	A1	161.90	1,742.64	107.13	1,153.15	13.56	145.96
B-1404	2BHK + 2T	D1	105.48	1,135.43	69.51	748.21	7.54	81.16
B-1405	1BHK + 1T	H1	69.83	751.63	47.64	512.80	2.72	29.28
B-1406	3BHK + 2T	C1	133.93	1,441.61	90.30	971.99	8.63	92.89

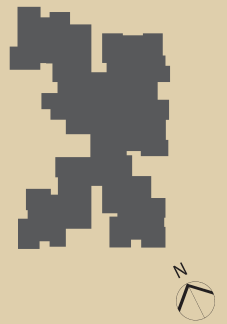
Furniture and fixtures shown only for representative purpose

TOWER - B

TOWER - A



KEY PLAN



**TYPE A**  
**3 BHK + 3T**  
A-1703



**TYPE F**  
**1 BHK + 1T**  
A-1702



**TYPE B**  
**3 BHK + 2T**  
A-1701



**TYPE E**  
**2 BHK + 2T**  
A-1704



**TYPE C**  
**3 BHK + 2T**  
A-1705



Unit No.	Type Of Units		Saleable Area		Carpet Area		Balcony Area		Terrace Area	
	Unit Description	Type	In Sqm	In Sft	In Sqm	In Sft	In Sqm	In Sft	In Sqm	In Sft
A-1701	3BHK + 2T	B	136.87	1,473.31	90.91	978.56	9.54	102.69	-	-
A-1702	1BHK + 1T	F	69.70	750.27	47.64	512.80	2.62	28.20	-	-
A-1703	3BHK + 3T	A	161.90	1,742.64	107.13	1,153.15	13.56	145.96	87.02	936.68
A-1704	2BHK + 2T	E	109.01	1,173.37	70.21	755.74	7.43	79.98	-	-
A-1705	3BHK + 2T	C	133.93	1,441.61	90.30	971.99	8.63	92.89	-	-

**TOWER - A**  
**17<sup>th</sup> FLOOR PLAN**

Furniture and fixtures shown only for representative purpose

**TYPE A**  
3 BHK + 3T  
B-1703



**TYPE G**  
2 BHK + 2T  
B-1702



**TYPE B**  
3 BHK + 2T  
B-1701



**TYPE H**  
1 BHK + 1T  
B-1704

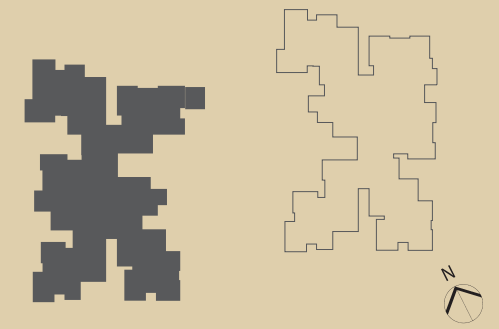


**TYPE C**  
3 BHK + 2T  
B-1705



TOWER - B

TOWER - A



KEY PLAN

**TOWER - B**  
**17<sup>th</sup> FLOOR PLAN**

Unit No.	Type Of Units		Saleable Area		Carpet Area		Balcony Area		Terrace Area	
	Unit Description	Type	In Sqm	In Sft	In Sqm	In Sft	In Sqm	In Sft	In Sqm	In Sft
B-1701	3BHK + 2T	B	136.87	1,473.31	90.91	978.56	9.54	102.69	-	-
B-1702	2BHK + 2T	G	108.77	1,170.79	70.14	754.99	7.58	81.59	-	-
B-1703	3BHK + 3T	A	161.90	1,742.64	107.13	1,153.15	13.56	145.96	87.50	941.85
B-1704	1BHK + 1T	H	69.83	751.63	47.64	512.80	2.72	29.28	-	-
B-1705	3BHK + 2T	C	133.93	1,441.61	90.30	971.99	8.63	92.89	-	-

Furniture and fixtures shown only for representative purpose

# UNIT PLANS

**TYPE A**  
**3BHK + 3T**  
 SBA : 1742.64 sq. ft.



**TYPE B**  
**3BHK + 2T**  
 SBA : 1473.31 sq. ft.

# UNIT PLANS

**TYPE C**  
**3BHK + 2T**  
SBA : 1441.61 sq. ft.



**TYPE D**  
**2BHK + 2T**  
SBA : 1135.43 sq. ft.





**TYPE E**  
**2BHK + 2T**  
 SBA : 1173.37 sq. ft.

**TYPE F**  
**1BHK + 1T**  
 SBA : 750.27 sq. ft.



Furniture and fixtures shown only for representative purpose

# UNIT PLANS

**TYPE F2**  
**1BHK + 1T**  
 SBA : 970.56 sq. ft.





**TYPE H**  
**1BHK + 1T**  
 SBA : 751.63 sq. ft.

**TYPE H2**  
**1BHK + 1T**  
 SBA : 964.19 sq. ft.



## OUR ON-GOING PROJECTS



**MAGNIFICIA**  
Old Madras Road, Bengaluru



**PIPAL TREE**  
Kengeri Tavarekere Road, Bengaluru



**GREENAGE**  
Hosur Main Road, Bengaluru



**EXOTIC**  
Bagalur Main Road, Bengaluru



**OPUS**  
Tumkur Road, Bengaluru



**ANUGRAHA**  
Magadi Main Road, Bengaluru



**ASPIRE**  
Hennur Main Road, Bengaluru



**MISTY CHARM**  
Kanakapura Main Road, Bengaluru



**LAUREL HEIGHTS**  
Hesaraghatta Main Road, Bengaluru



**DIVINITY**  
Mysore Road, Bengaluru



**CADENZA**  
Kudlu Gate Junction, Bengaluru



**NORTHLAND**  
Hennur Road, Bengaluru



**LUXURIA**  
Malleswaram, Bengaluru



**PARK CUBIX**  
Devanahalli, Bengaluru



**SERENE LIFE**  
Shettigere, Bengaluru



**NAVARATNA RESIDENCY**  
Avinashi Road, Coimbatore



**NECKLACE PRIDE**  
Kavadiiguda, Hyderabad



**HM ROYAL**  
Kondhwa (opposite Talab factory), Pune



**MAGNUS**  
Shaikpet, Hyderabad



**WATER'S EDGE**  
Sancoale, Goa

## CORPORATE OVERVIEW

Built on the bedrock of trust, innovation and knowledge-leadership, the Salarpuria Sattva Group is one of India's leading Property Development, Management and Consulting organizations. Founded in 1993, the Group has set its footprints across India and is one of the most preferred brands in the country today.

A pioneering spirit has led Salarpuria Sattva to transition through a course of natural evolution and diversification, into a cache of business verticals. From elegant residences to colossal commercial spaces, cutting-edge IT parks, high rises, swank shopping malls and the best of schools, the Salarpuria Sattva brand is a familiar sight in the metropolises of India and one that marks India's mercurial rise in the world's urban landscape.

## AWARDS & RECOGNITION



2020  
TIMES BUSINESS AWARD  
Best Developer - Residential



2020  
CONSTRUCTION WORLD  
Architect & Builder Award  
Best Developer - Residential  
Outstanding Projects - Knowledge City,  
Knowledge Point and Divinity



2020  
IBE - INDIA PROPERTY AWARDS  
Developer of the Year 2020 - Commercial  
Salarpuria Sattva



2020  
ET NOW Global Real Estate Congress  
Real Estate Awards  
Developer of the Year - Commercial  
Salarpuria Sattva



2020  
ET NOW  
Business Leader Of the Year  
Bijay Agarwal - Managing Director  
Salarpuria Sattva



2020  
COMMONFLOOR REALTY AWARDS  
Best Developer of the Year  
Karnataka



CARE Awards 2019  
CREDAI Award for Real Estate  
Best Residential Dwellings  
above 1500 Sq.Ft.  
Salarpuria Sattva Greenage



2019  
SILICON INDIA REAL ESTATE  
AWARDS BENGALURU  
India's Most Trusted  
Developer of the Year - 2019  
Salarpuria Sattva Group



2019  
CREDAI Telangana's CREATE Award  
Best Office/Commercial having  
more than 1 lakh Sq.Ft. build up area  
Salarpuria Sattva Knowledge City



2019  
TIMES BUSINESS AWARD  
Best Developer - Residential



2018  
REALTY PLUS  
CONCLAVE AND  
EXCELLENCE AWARDS- SOUTH  
Developer of the Year - Commercial  
Iconic Project of the Year -  
Salarpuria Sattva Knowledge City



2017-2018  
ASIA ONE - GOY  
Global Indian of the Year  
Bijay Agarwal - MD



2018  
ASIA ONE AWARD  
World's Greatest Brands  
Awarded to  
Salarpuria Sattva Group



2017 - 18  
IN ASSOCIATION  
WITH TIMES NOW  
Extraordinaire Brand  
Brand Vision Summit  
Bijay Agarwal - MD  
Salarpuria Sattva NexBrands



2018  
ET NOW  
CSR LEADERSHIP AWARD  
Best project of the Year  
Knowledge City, Hyderabad



2018  
CNBC-AWAAZ  
Real Estate Awards (South)  
Luxuria, Bengaluru



2017  
9TH REALTY PLUS  
Excellence Awards (South)  
Developer of the year  
- Residential



2017  
9TH REALTY PLUS  
EXCELLENCE AWARDS (SOUTH)  
Commercial Project of the year  
Salarpuria Sattva  
Knowledge City, Hyderabad



2017  
THE GOLDEN GLOBE TIGERS  
AWARDS  
Most Sustainable Real Estate Company  
Excellence in Delivery



TRUST. IT'S WHAT WE BUILD

**SALARPURIA SATTVA**

**RERA : PRM/KA/RERA/1251/446/PR/210111/003772**

**CORPORATE OFFICE**

**BENGALURU**

4th Floor,  
Salarpuria Windsor  
No.3, Ulsoor Road  
Bengaluru - 560 042

**Tel: +91 80 42699000**

**KOLKATA**

No. 5, Chittaranjan  
Avenue, 1st Floor  
Kolkata - 700 072

**Tel: +91 33 40306000**

**HYDERABAD**

Orwell – I, G Floor  
Knowledge City, Sy. No. 83/1  
Plot No. 2, Hyderabad  
Telangana - 500 081

**Tel: +91 40 48490000**

**PUNE**

H M Royal  
Arti Properties Pvt. Ltd.  
Sy. No. 18 & 19, Kondhwa Bdrk.  
Pune - 411 048

**Ph: +91 20 26951234**

**GOA**

Water's Edge  
Plot No. 199/2, Near MES  
College, Zuari Nagar  
Sancoale, Goa - 403 726

**Ph: +91 9379228866**

**COIMBATORE**

Navaratna Residency  
1215, Avinashi Main Road  
Near Lakshmi Mills Junction  
Coimbatore - 641 037

**Ph: +91 7338084422**

**CREDAI**

A CRISIL 'A' STABLE RATED COMPANY  
Founding Member RICC

An ICRA 'A' STABLE RATED COMPANY  
ISO 9001, 14001 & 18001 CERTIFIED

**www.sattvagroup.in | Call Toll-Free No.: 1800 121 3344 | E: enquiry@sattvagroup.in**

The information depicted herein viz., master plans, floor plans, furniture layout, fittings, illustrations, specifications, designs, dimensions, rendered views, colours, amenities and facilities etc, are subject to change without notifications as may be required by the relevant authorities or the developer's architect, and cannot form part of an offer or contract. Whilst every care is taken in providing this information, the Developer cannot be held liable for variations. All illustrations and pictures are artist's impression only. The information are subject to variations, additions, deletions, substitutions and modifications as may be recommended by the company's architect and/or the relevant approving authorities. The Developer is wholly exempt from any liability on account of any Claim in this regard. (1 square metre = 10.764 square feet). E & OE.